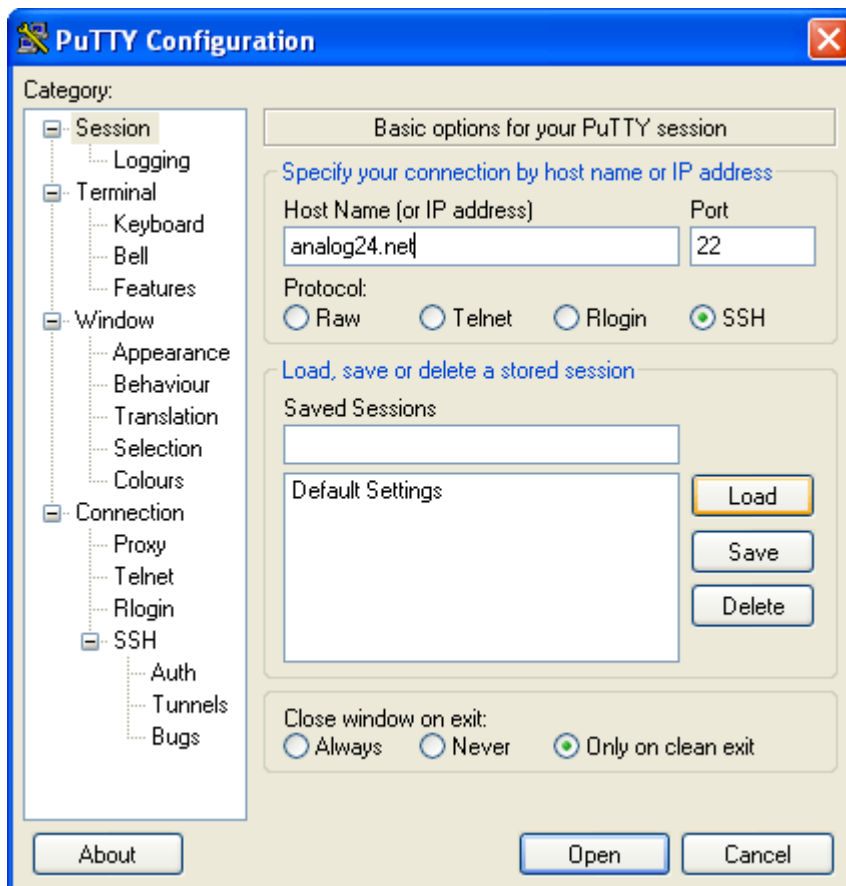
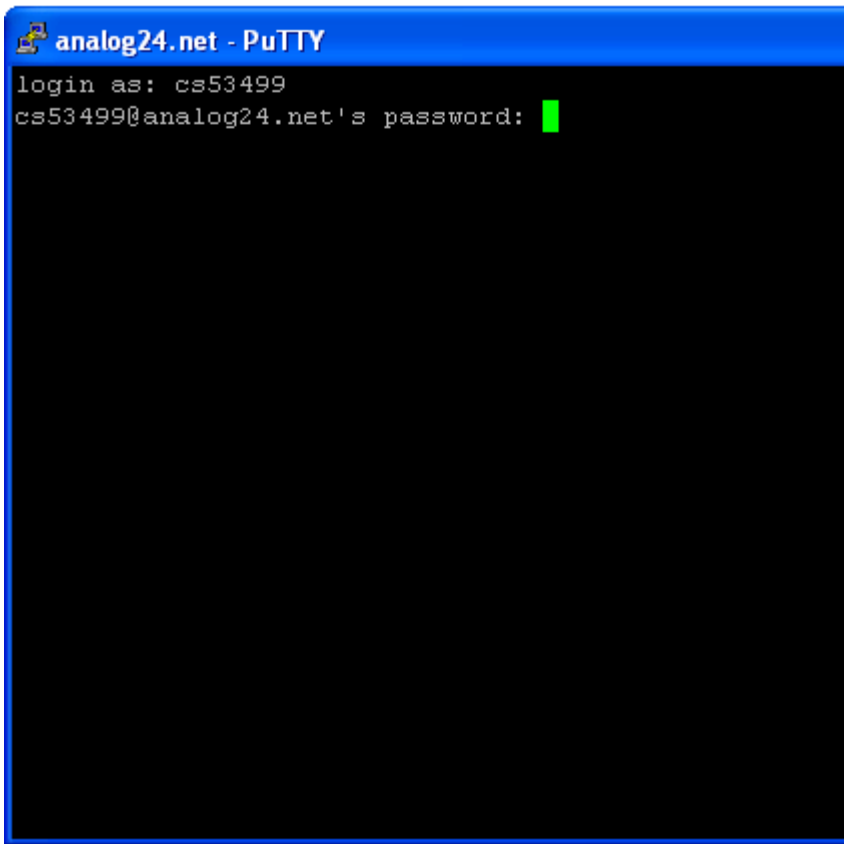


How to Use Putty to Log In to Your Account

1. Double-click on the Putty icon, and the screen below should show up.
2. Enter analog24.net in the Host Name field, and click the SSH button. The Port number should be 22.



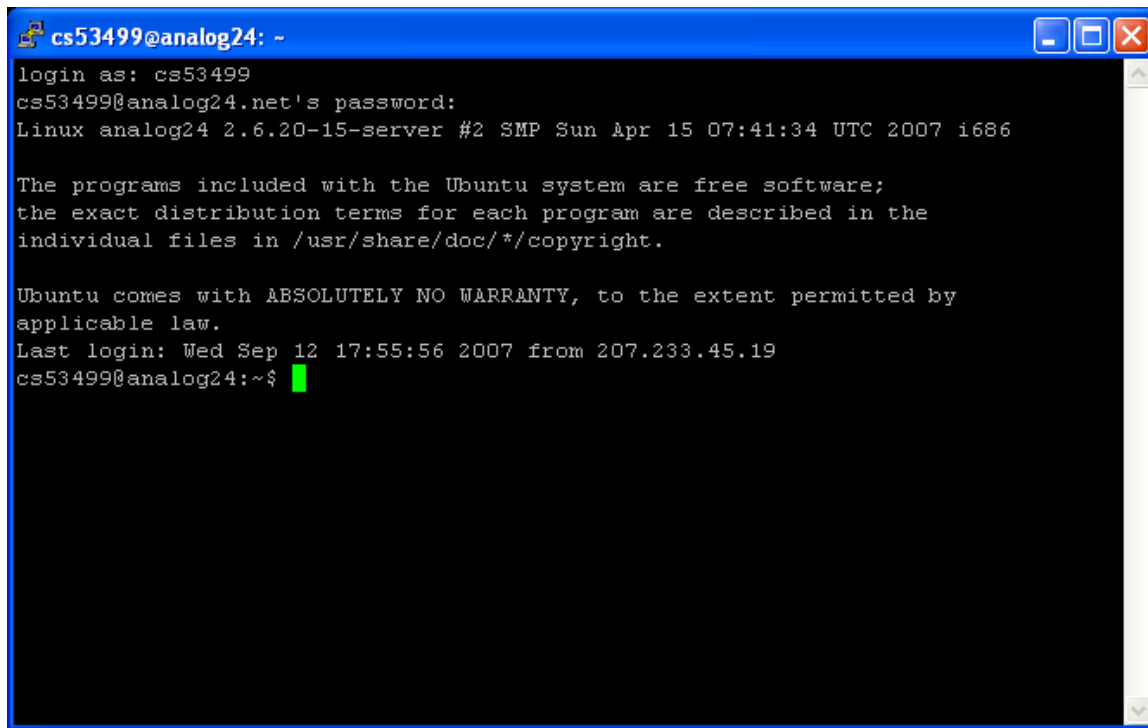
3. Click the Open button, and the screen below should show up.



4. At the login as: prompt, type your username
And press the enter key

5. At the Password: prompt, enter your password.

6. NOTE: nothing will appear on the screen will display when you type your password

A screenshot of a Putty terminal window. The title bar reads "cs53499@analog24: -". The terminal output shows a successful login process. The user "cs53499" has logged in as "cs53499" on the system "analog24.net". The terminal displays the system version "Linux analog24 2.6.20-15-server #2 SMP Sun Apr 15 07:41:34 UTC 2007 i686". It also shows the Ubuntu license notice: "The programs included with the Ubuntu system are free software; the exact distribution terms for each program are described in the individual files in /usr/share/doc/*/copyright. Ubuntu comes with ABSOLUTELY NO WARRANTY, to the extent permitted by applicable law." The last login information is "Last login: Wed Sep 12 17:55:56 2007 from 207.233.45.19". The prompt is "cs53499@analog24:~\$" with a green cursor.

7. If all went well, you should be logged into your account.

8. Remember to log out when you're done using CTRL+D